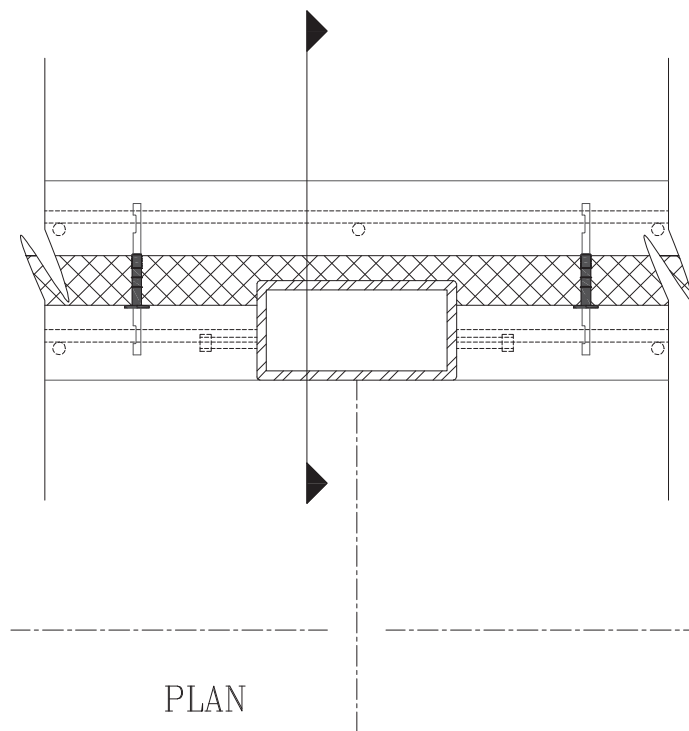


SECTION



COPYRIGHT 2006 COMPOSITE TECHNOLOGIES CORPORATION

THIS DRAWING IS THE EXCLUSIVE PROPERTY OF CTC. ANY REPRODUCTION, COPY, OR OTHER UNAUTHORIZED USE OF THIS DRAWING, INCLUDING BUT NOT LIMITED TO USE OF THIS DRAWING IN THE INSTALLATION OF A NON-CTC INSULATION SYSTEM, IS A VIOLATION OF U.S. COPYRIGHT LAWS AND OTHER RIGHTS OF CTC.

Composite Technologies Corporation  
 1000 Technology Drive., Boone, IA 50036  
 Wats: (800) 232-1748; Ph: (515) 433-6075; Fax: (515) 433-6088  
 Email: info@thermomass.com

PROJECT: **COMPOSITE WALL DETAIL FILE**

DETAIL: **GIRDER DETAIL**

SCALE: **1 1/2" = 1'-0"**

DRAWN BY: **TJB**

CHECKED BY: **DXN**

DATE: **02/21/06**

REVISION: **09/07/06**

CONFIGURATION:

**3"/2"/3"**

PROJECT NO.:

DRWG. NO.:

**CWT-R80**



**C-BAR TILT UP**

CONSTRUCTION DOCUMENTS BASED ON DETAILS PROVIDED BY COMPOSITE TECHNOLOGIES CORPORATION WILL VARY ACCORDING TO PROJECT DEMANDS. REFER TO THE PROJECT ARCHITECT OR ENGINEER FOR SPECIFIC DETAILS.