

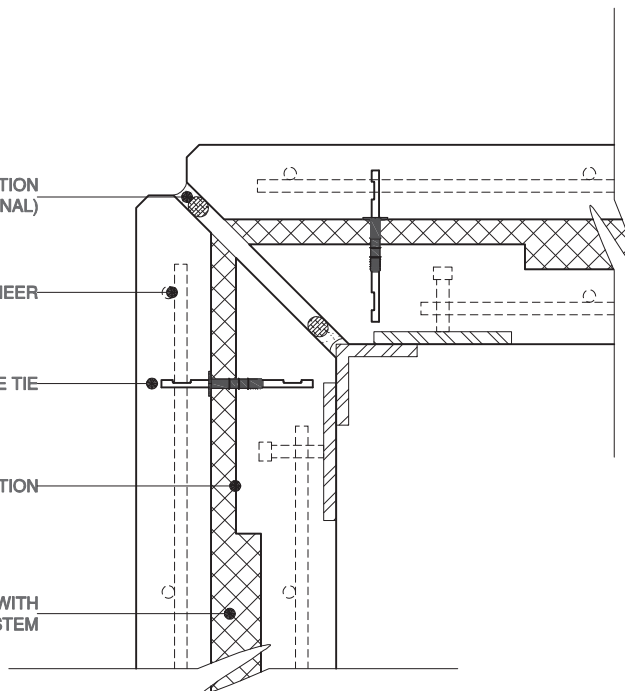
CAULK AND BACKER ROD (JOINT INSULATION
OPTIONAL)

REINFORCING PER STRUCTURAL ENGINEER

INVERTED C-BAR FIBER COMPOSITE WYTHER TIE

REDUCED INSULATION

STYROFOAM INSULATION AS PROVIDED WITH
THE THERMOMASS SYSTEM



COPYRIGHT 2006 COMPOSITE TECHNOLOGIES CORPORATION

THIS DRAWING IS THE EXCLUSIVE PROPERTY OF CTC.
ANY REPRODUCTION, COPY, OR OTHER UNAUTHORIZED USE OF
THIS DRAWING, INCLUDING BUT NOT LIMITED TO USE OF THIS
DRAWING IN THE INSTALLATION OF A NON-CTC INSULATION SYSTEM,
IS A VIOLATION OF U.S. COPYRIGHT LAWS AND OTHER RIGHTS OF CTC.

Composite Technologies Corporation
1000 Technology Drive., Boone, IA 50036
Wats: (800) 232-1748; Ph: (515) 433-6075; Fax: (515) 433-6088
Email: info@thermomass.com

PROJECT: **COMPOSITE WALL DETAIL FILE**

DETAIL: **45° MITER JOINT**

SCALE: **1 1/2" = 1'-0"**

DRAWN BY: **TJB**

CHECKED BY: **DXN**

DATE: **02/14/06**

REVISION: **08/31/06**

CONFIGURATION:

3"/2"/3"

PROJECT NO.:

DRWG. NO.:

CWT-C40



C-BAR TILT UP

CONSTRUCTION DOCUMENTS BASED ON DETAILS PROVIDED BY COMPOSITE TECHNOLOGIES CORPORATION WILL VARY ACCORDING TO PROJECT DEMANDS. REFER TO THE PROJECT ARCHITECT OR ENGINEER FOR SPECIFIC DETAILS.