

THE 2007 FLORIDA BUILDING CODE GOES INTO EFFECT MARCH 1, 2009.



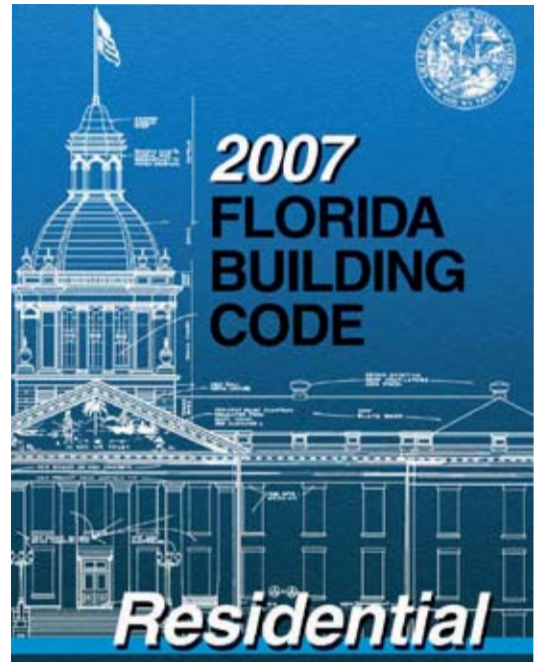
Part of this code is a mandated 15% improvement in energy efficiency. For masonry walls, the prescriptive code mandates a tested R-6 insulation (One inch Tuff-R is R 6.5). Using the trade off methods you can achieve this 15% any number of ways including changing the R-value of your walls.

This increase is the first of a series of energy efficient initiatives that will become law in the coming years.

You can improve the R-value of your concrete walls by installing continuous, high R-value foam insulation. These inexpensive products also help you control moisture in your walls by restricting intrusion and controlling the dew point.

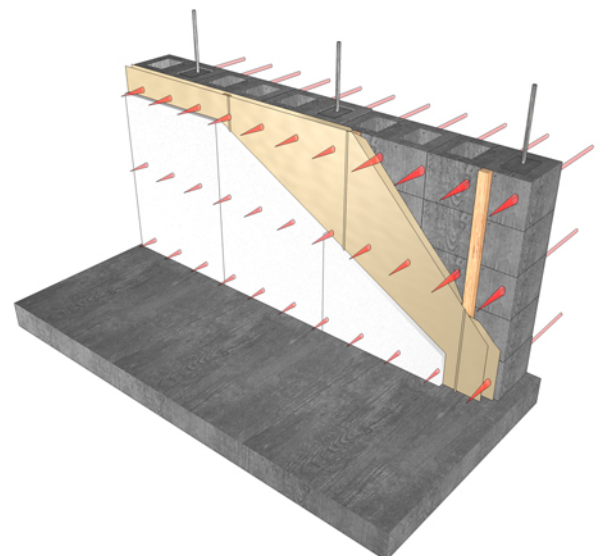
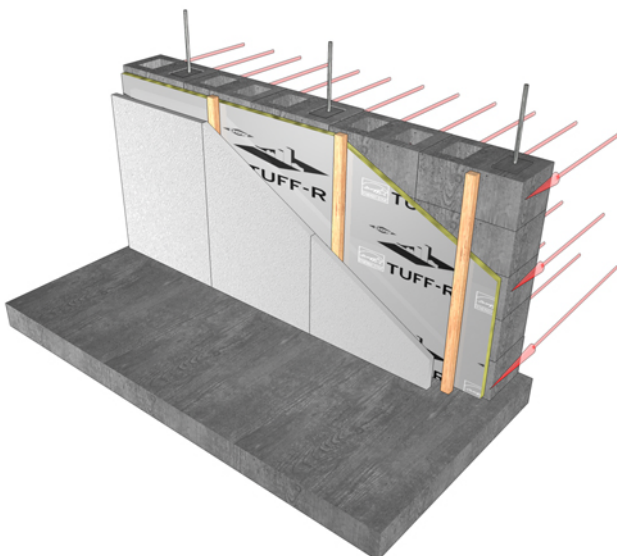
Because Continuous Insulation works best it will become part of the code as it is upgraded.

In their block walls many builders use insulation installed between furring strips or in concrete block voids that only resists heat flow one way and are full of insulation short circuits. Continuous Dow Styrofoam or Tuff-R Rigid Insulations fight heat gain in multiple ways. Tuff-R insulation has aluminum foil to combat radiant heat and contains closed cell thermal set foam that blocks conduction and convection. Continuous Styrofoam insulation reduces conduction and convection. Tuff-R and Styrofoam are Energy Star products. Tuff-R has no ozone depletion potential.



Continuous Insulation wall with Dow Insulations installed on the interior of the block with furring strips installed over the insulation creating a conditioned space for additional R - value and a race way for wiring.

Typical reflective insulation wall with insulation installed between furring has many short circuits.



Dow Insulation comparisons.
One airspace R-Value can be used in code calculations.

Insulation	Product R-Value	Air space and reflective R-Value	System R-Value including Framing
Reflective only	-	4.1	5.92
.75 Tuff -R	5	2.8	10.16
1" Tuff-R	6.5 **	2.8	11.66
.55 Styrofoam	2.8	1.3	6.67
.78 Styrofoam	4	1.3	7.94
1" Styrofoam	5	1.3	8.77

•All walls contain lightweight concrete block, nominal 1" wood furring and 1/2" wall board.

** Meets the new Florida Prescriptive Code.

TUFF-R™ and Styrofoam Sheathing Features & Benefits that figure In for Energy Savings	
Features	Benefits
Low-emissivity foil facers (both sides of TUFF-R™ Insulating Sheathing)	Reflects radiant heat and provides high R-value for the 3/4" air space between TUFF-R™ and gypsum drywall.
Vapor-retarder quality facers	The result - the air conditioner has to remove less moisture from the indoor air and a more comfortable indoor environment .
Dow Foam Insulation	Dow insulations are backed by a 15 year limited warranty. Ask for details.
Continuous insulation; no framing short circuits	Insulating Sheathing covers the whole wall. Furring strips are installed over the boards allowing room for shallow electrical boxes. This feature also increases R-value.
Dow Insulations	Dow insulations are closed cell, rigid plastic foam manufactured exclusively by The Dow Chemical Company by a unique process.
Perm ratings	Styrofoam at 1 inch and under has Perm rating slightly higher than 1. Tuff-R has a Perm rating of .03

Additional information is available.